

PTC University eLearning Libraries

Improve Productivity via Convenient, Web-based Training

PTC University eLearning Libraries offer a simple, online approach to help you increase your proficiency and adoption of PTC products. With access to over 2000 hours of training content, you and your team can receive the training you want – when and where you need it most.

On-Demand Learning

PTC University understands that today's business environment sometimes doesn't allow you to be off-site for multiple days attending a traditional training class. That's why PTC University created eLearning Libraries – an online alternative to the instructor-led class, which offers the same high level of quality and content.

By having training available whenever you have the time, you always have the opportunity to expand your knowledge and reinforce concepts. If it's not convenient for an entire group to attend an off-site class, everyone on your team can still learn new, advanced features at their own pace and time.

PTC University eLearning Libraries provide the ideal venue for learning and reinforcement outside the classroom.

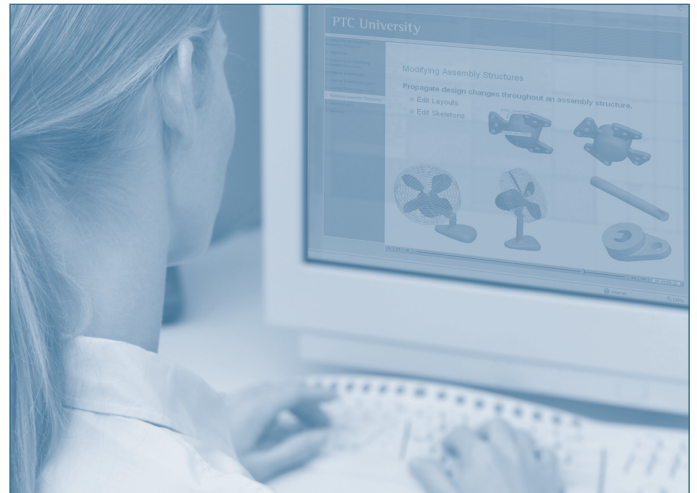
The eLearning Advantage: Training 24/7/365

PTC University eLearning Libraries give you online access to comprehensive collections of both basic and advanced web-based training courses. You simply log into the online PTC University Precision LMS (Learning Management System) and take a course whenever your schedule permits. Unlike other eLearning solutions, PTC University web-based training is an interactive experience, complete with hands-on exercises, demonstrations and recorded lectures. Further, all the material is modular, so users can focus on the specific topics they need rather than navigating through an entire course.

Quality training – available on your schedule – that's the PTC University eLearning advantage.

Benefits

- **Efficient:** content is available in short, easy-to-absorb modules covering both basic and advanced capabilities
- **Accessible:** the eLearning Libraries are open 24 hours a day, 7 days a week, 365 days a year



eLearning brings the classroom experience directly to your fingertips.

- **Learn at your own pace:** stop and restart training at any time to accommodate your schedule
- **Innovative:** utilizes the PTC University Precision Learning Methodology that combines robust lectures, product demonstrations, hands-on exercises, and assessments into one comprehensive course
- **Cost-effective:** eliminates travel expenses and time spent out of the office for essential training
- **Enables continuous learning:** provides online access, job aids and advanced programs
- **Accountable:** progress is tracked and measured using PTC University Precision LMS

Features

Comprehensive Content

PTC University eLearning Libraries offer both basic and advanced subjects within these PTC product families:

- Pro/ENGINEER®
- Windchill®
- Mathcad®
- Arbortext®
- CoCreate®

Libraries can be purchased on either a per-user basis or a corporate basis. With the purchase of optional support, users also receive access to a variety of additional benefits. This includes all new training content as it becomes available, updates to the PTC University Precision LMS, and support through our PTC University Support Team.

Unlimited Access to Robust Online Tools and Content

Each eLearning Library includes unlimited access to an entire collection of eLearning tools and content for the particular product family, including:

- **Web-based Training:** a comprehensive collection of self-paced courses, complete with recorded lectures and demonstrations, HTML-based lecture reviews, lab exercises and learning assessments
- **Recorded Virtual Classroom Material:** a host of specialty topics taught with an instructor – on your own time
- **Pro/FICIENCY Benchmark Assessment:** an objective, web-based tool to assess user proficiency and educational program effectiveness
- **eKnowledge Assets:** downloadable resource materials that augment training and act as handy references

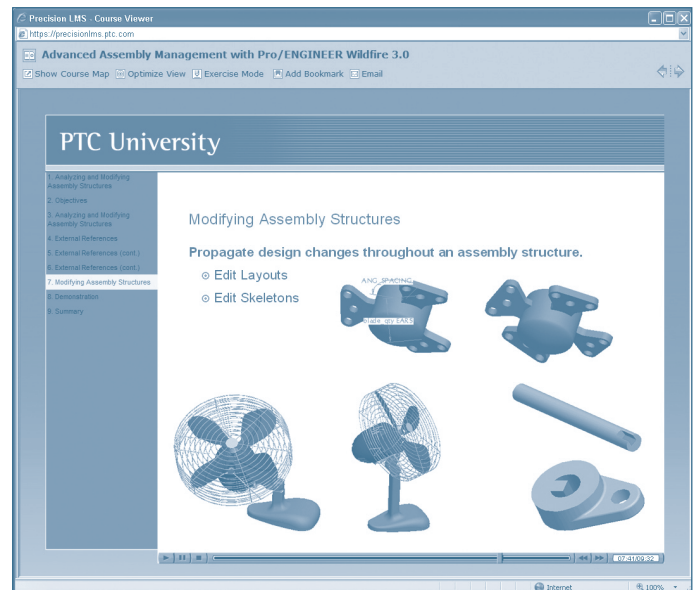
Robust Learning Management System (LMS)

All libraries include full access to the PTC University Precision LMS. Built on leading-edge technology, the PTC University Precision LMS is a powerful tool that's beneficial to both individual users and management. Students receive an online, personalized environment where you can:

- Create and manage a personal development plan
- Quickly find new courses, track your progress and test your skills
- Easily search training content to find exactly what you need, when you need it
- Receive targeted development suggestions based on assessment results
- View complete transcripts and all Pro/FICIENCY assessment results

Managers can use the PTC University Precision LMS to:

- Track the effectiveness of training programs
- Get real-time reports on the progress and proficiency of individuals and teams
- Create development plans for their entire staff
- Track team enrollments and transcripts online



PTC University eLearning Libraries include interactive lab exercises, recorded lectures, demonstrations and proficiency assessments.

eLearning Libraries are available within each of these PTC product families:

Pro|ENGINEER® Mathcad®
 Arbortext® CoCreate®
 Windchill®

See a full list of libraries and courses at: www.ptc.com/go/elearning

For More Information

To learn more about the value of PTC University eLearning Libraries, visit www.ptc.com/go/elearning, or contact a PTC University training adviser at:

- North America 1-877-ASK-4PTC
- Europe 00-800-78-24-43-57
- Japan 0120-355-543
- Korea 02-3484-8181
- Taiwan 02-2757-5576
- China 800-830-9376

©2009, Parametric Technology Corporation (PTC). All rights reserved. Information described herein is furnished for informational use only, is subject to change without notice, and should not be construed as a guarantee, commitment, condition or offer by PTC. PTC, the PTC Logo, Pro/ENGINEER, Windchill, Mathcad, Arbortext, CoCreate and all PTC product names and logos are trademarks or registered trademarks of PTC and/or its subsidiaries in the United States and in other countries. All other product or company names are property of their respective owners.